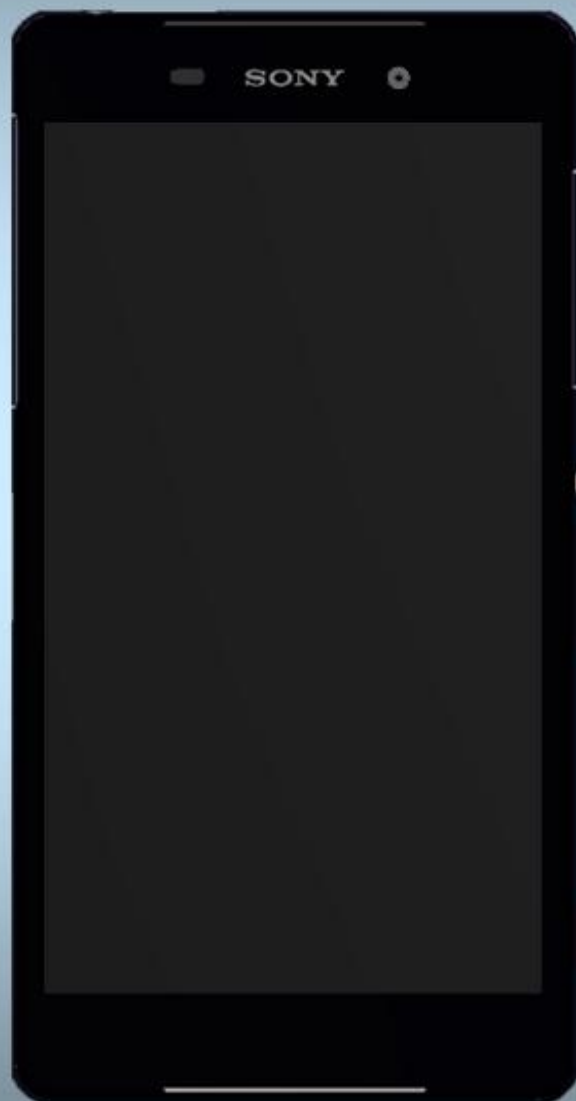


# Component Replacement

- electrical -



**Xperia™ Z2**  
**D6502, D6503, D6543, L50w**

**CONTENTS**

1 Replaceable Components ..... 3

2 Component Placing..... 5

3 Additional Repair info ..... 6

4 Revision History ..... 10

*For general information about electrical repair related issues, refer to 1220-1336: Generic Repair Manual - electrical*

*Test after electrical replacement: refer to 1273-1772 Mechanical Test Instruction*

*Do not remove shield can lids (Heat pasta are added and RF performance will be damaged)*

# 1 Replaceable Components

## EXPLANATION OF ABBREVIATIONS USED IN THE COLUMN 'COMMENTS' BELOW

### **COMPONENT LOCATION**

**P** = Primary side

**S** = Secondary side

### **REPAIR METHOD**

**HA** = Hot Air (removal & mounting)

**ST** = Soldering Tool (removal & mounting)

**HA/ST** = Hot Air for removal - Soldering Tool for mounting

**BGA** = BGA Station

**BH** = Bottom Heater

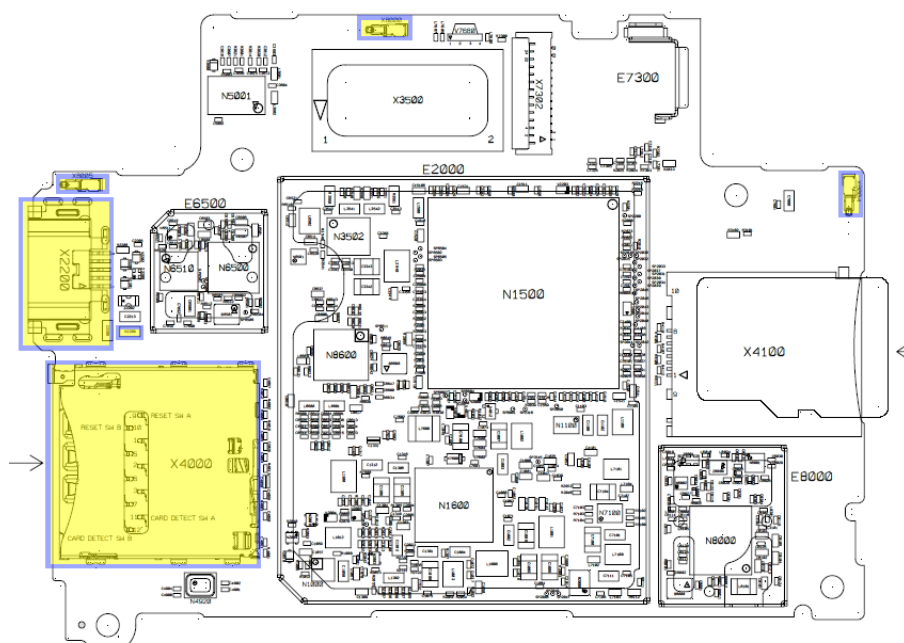
### **ADDITIONAL INFORMATION**

⇒1 (2,3,4, etc.) = Proceed to 'Additional Repair Info' for further instructions in the indicated section(s).

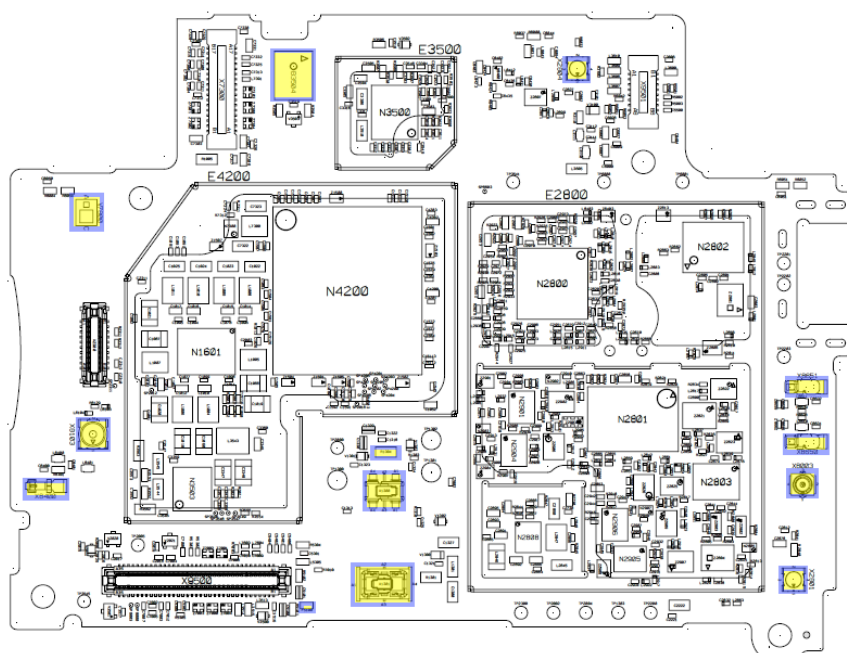
Position	Component	Part no.	Comments
B3504	Microphone	1210-7410	S HA+BH or BGA ⇒1
F5100	Fuse 0.25A 1.0*0.5mm	1265-7224	S HA+BH ⇒2
R1304	Resistor 0.01 Ohm +/-1% 200.0 mW (1.6x0.	1238-2147	S HA+BH ⇒3
R2200	Resistor 0.0 Ohm +/-50m 63.0 mW K0603	1000-0257	P HA+BH ⇒4
V7800	LED flash LED 2.03mmx1.63mmx0.70mm	1277-7270	S HA+BH ⇒5
X1300	Conn BtB Plug 4p HIROSE/BM22	1264-8491	S HA+BH ⇒6
X1301	Conn BtB Receptacle 4p HIROSE/BM22	1264-6156	S HA+BH ⇒7
X2200	Conn USB B Receptacle 5p	1268-3388	P HA+BH or BGA ⇒8
X2801	Conn Coax Receptacle 1p	1237-5326	S HA+BH ⇒9
X2804	Conn Coax Receptacle 1p	1237-5326	S HA+BH ⇒10
X4000	Card Conn SIM	1271-9742	P HA+BH or BGA ⇒11
X8000	Conn Leaf Spring Plug 1p Antenna/GND Spr	1239-2123	P HA+BH ⇒12
X8003	Conn Coax Receptacle 1p	1261-3585	S HA+BH ⇒13
X8004	Conn Leaf Spring Plug 1p Antenna/GND Spr	1239-2123	P HA+BH ⇒12
X8005	Conn Leaf Spring Plug 1p Antenna/GND Spr	1239-2123	P HA+BH ⇒12
X8103	Conn Coax Receptacle 0p test switch	1221-6477	S HA+BH ⇒14
X8400	Conn Leaf Spring Plug 1p	1252-2057	S HA+BH ⇒15
X8650	Conn Leaf Spring Plug 1p Antenna/Groundi	1238-5878	S HA+BH ⇒16
X8651	Conn Leaf Spring Plug 1p Antenna/Groundi	1238-5878	P HA+BH ⇒16

## 2 Component Placing

To access the Component Placing document, double-click the icon below.  
Applicable for on-screen viewing only – icon not shown on hard-copies.



**Primary side**



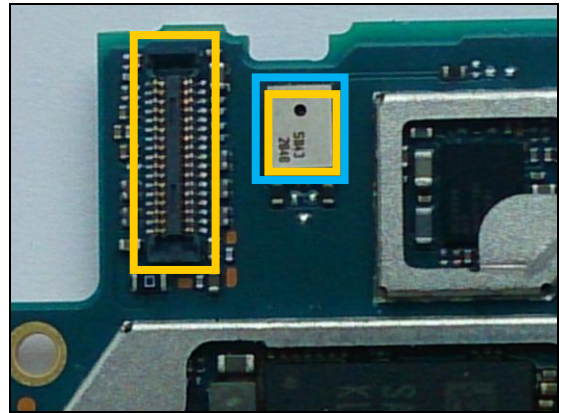
**Secondary side**

### 3 Additional Repair info

1

**B3504**

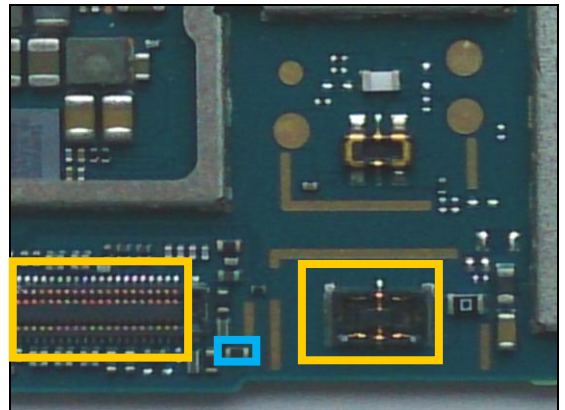
*Replace if no audio from secondary mic*  
*Protect the BtB connectors with capton tape!*  
*When replacing protect secondary mic with capton tape!*



2

**F5100**

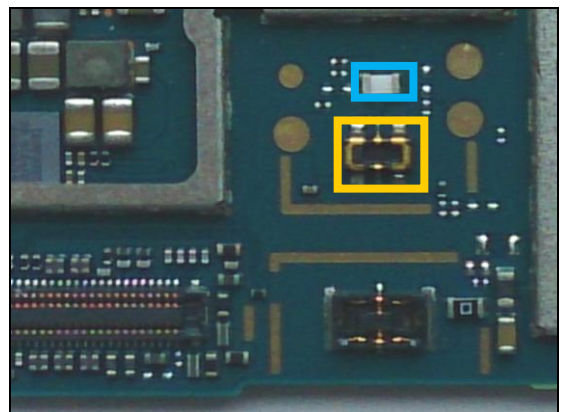
*Replace if open circuit (Vibrator not working)*  
*Protect the BtB connectors with capton tape!*



3

**R1304**

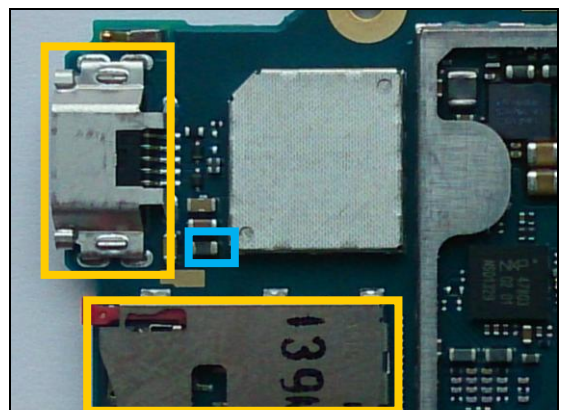
*Replace if open circuit (Phone dead)*  
*Protect the BtB connector with capton tape!*



4

**R2200**

*Replace if open circuit (USB charger or data transfer not working)*  
*Protect the USB and SIM connectors with capton tape!*

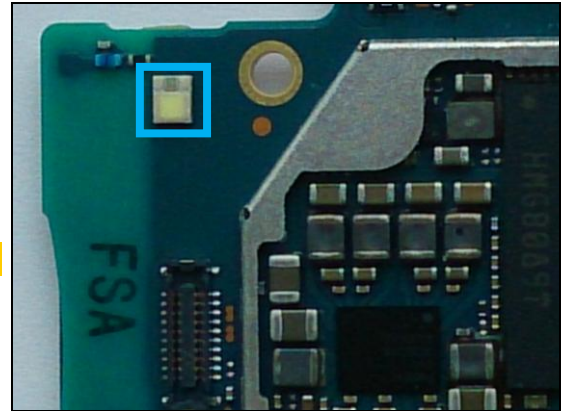


## Repair Actions: Additional Repair Info

5

V7800

**Replace if Flash LED not working**

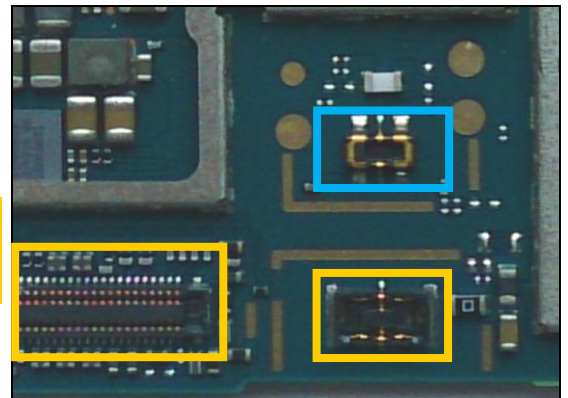


6

X1300

**Replace if mechanical damaged. (Phone dead or power off)**

**Protect the BtB connectors with capton tape!**

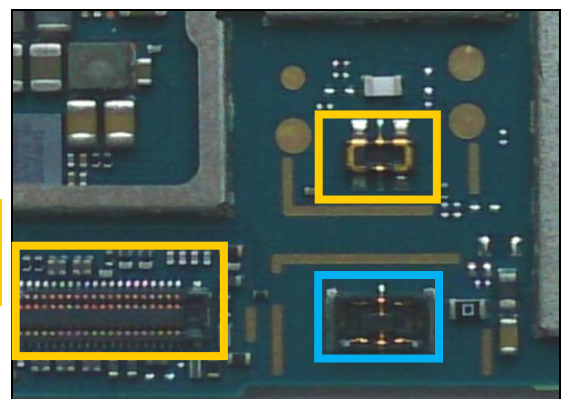


7

X1301

**Replace if mechanical damaged (Main charger not working)**

**Protect the BtB connectors with capton tape!**

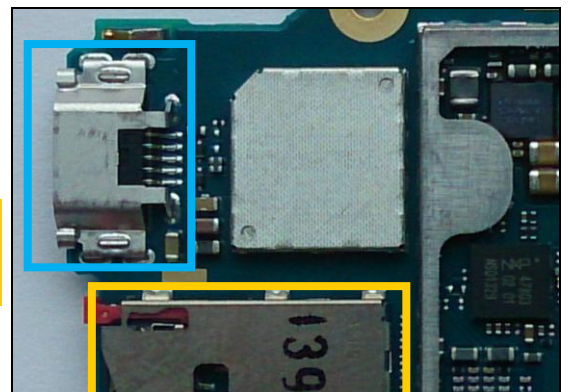


8

X2200

**Replace if mechanical damaged (USB charger or data transfer not working)**

**Protect the SIM connector with capton tape!**



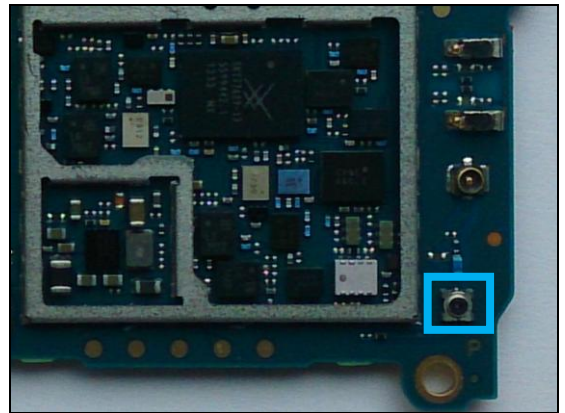


## Repair Actions: Additional Repair Info

**9**

**X2801**

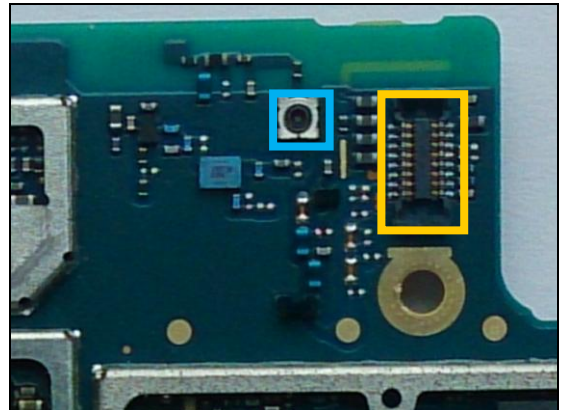
**Replace if open circuit 1-2 (No or bad network, main antenna)**



**10**

**X2804**

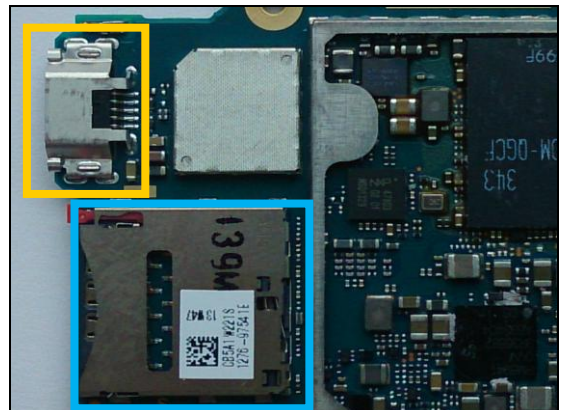
**Replace if open circuit 1-2 (No or bad GPS)  
Protect the BtB connector with capton tape!**



**11**

**X4000**

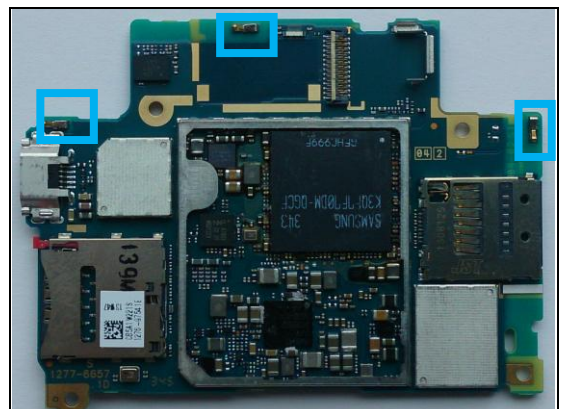
**Replace if mechanical damaged (No network, restart, No SIM card inserted)  
Protect the USB connector with capton tape!**



**12**

**X8000, X8001, X8002**

**Replace if mechanical damaged (No or bad GPS)  
Protect the USB connector with capton tape!**



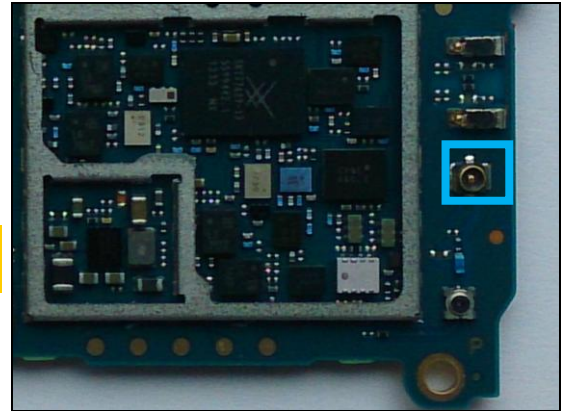


## Repair Actions: Additional Repair Info

13

X8003

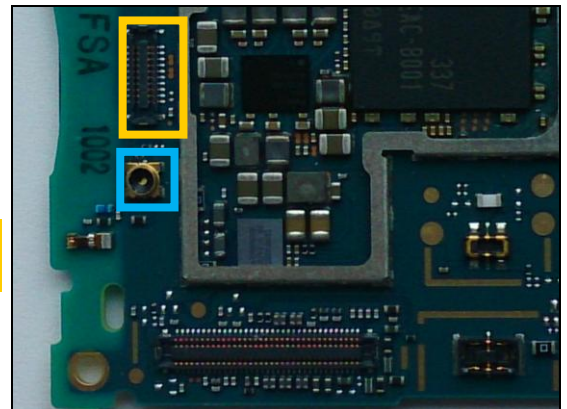
**Replace if mechanical damaged (No or bad network, main antenna)**



14

X8103

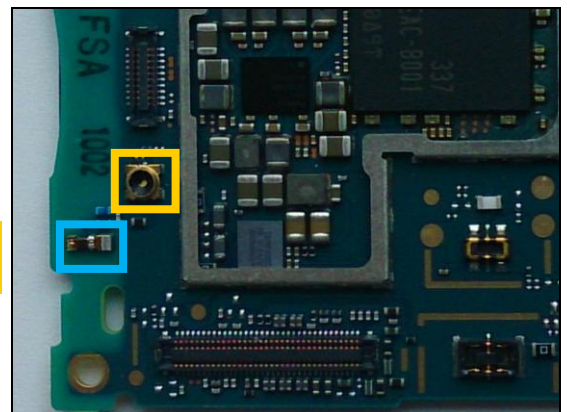
**Replace if open circuit 1-2 ( no or bad WLAN/ BT)  
Protect the BtB connector with capton tape!**



15

X8400

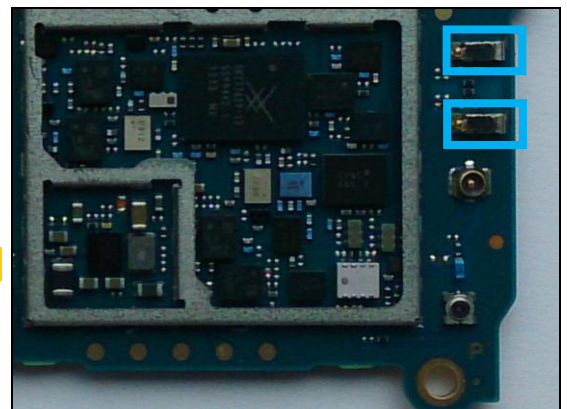
**Replace if mechanical damaged ( no or bad WLAN/ BT)  
Protect the RF connector with capton tape!**



16

X8650,X8651

**Replace if mechanical damaged ( no or bad NFC)**



## 4 Revision History

Rev.	Date	Changes / Comments
1	2014-05-28	Initial release
2	2014-05-28	X1300 and X1301 position corrected

